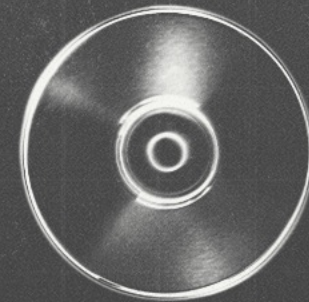


Generation to **GENERATION**

Uncommon Parenting Conference





Considering Foster Care & Adoption







Text Questions:
469-998-5684

Biblical People, Design & Motives

Biblical people are stewardship-focused (Genesis 1:27-28).

Biblical design is restoration-minded (Leviticus 25).

Biblical motives are Gospel-oriented (Romans 5:8).

Text Questions:
469-998-5684

Uncmn

What were your deciding factors
to foster or adopt?

Text Questions:
469-998-5684

Uncmn

What were your concerns?
What concerns did others have?

Text Questions:
469-998-5684

Uncmn

What did you think you knew
about foster/adoption v. what you
know now?

Text Questions:
469-998-5684

Uncmn

What was meeting and caring for
an adopted/foster child like?

Text Questions:
469-998-5684

Uncmn

How did you navigate
relationships and communication
with your child(ren)'s biological
family?

Text Questions:
469-998-5684

Uncmn

Q&A

Text Questions:
469-998-5684

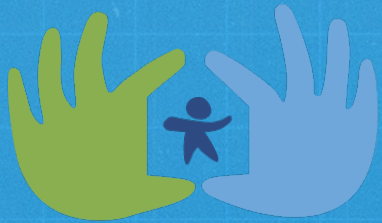


Get updates
and invites on:



Next Steps

1. What is your faithful response?
2. What path to foster or adopt will you take?



Safe Families
for Children



BUCKNER®
Hope shines here.®



FAMILY SERVICES
A spirit of home. Everyday

3. Email familyrestoration@watermark.org to begin *Intro to Foster Care & Adoption*.

Uncmn